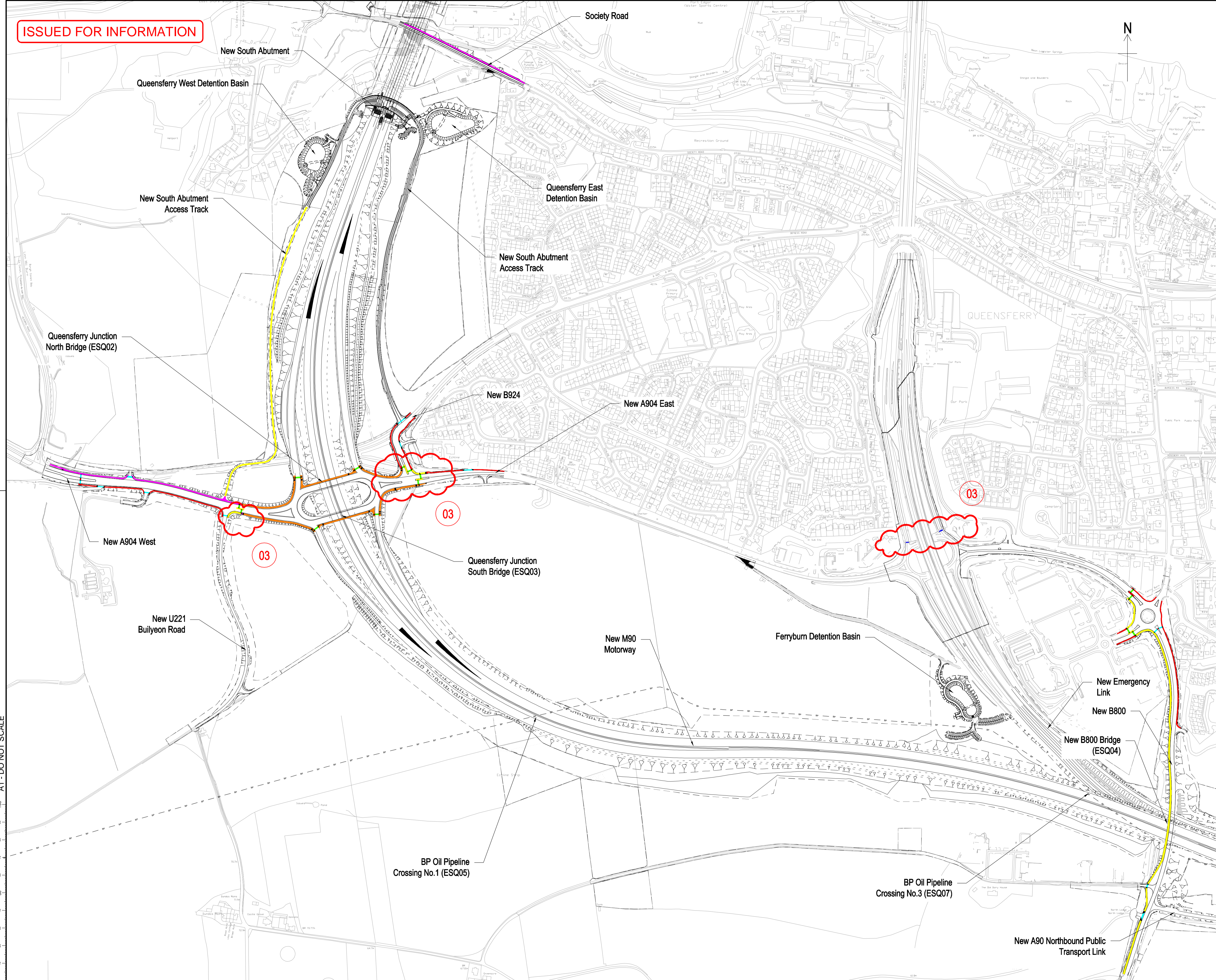


ISSUED FOR INFORMATION



DRAWING NOTES

1. This drawing shall only be used for the design element stated in the drawing title.
2. Only written dimensions shall be used.
3. All dimensions are in metres unless noted otherwise.

Legend

	3m Segregated Footway/Cycleway
	3m Un-Segregated Footway/Cycleway
	3.5m Un-Segregated Footway/Cycleway
	2.5m Combined Footway/Cycleway
	2m Pedestrian Footway
	Toucan Crossing
	Pedestrian Crossing
	Uncontrolled Crossing

LEGEND

	Restricted LMA
	Unrestricted LMA
	Existing BP Pipeline

Rev	Rev. Date	Purpose of revision	Drawn	Checked	Approved
03	26.07.2013	3m Cycleway Extended to U221 Bulyeon Road. PED Crossings Shown at Entire Junction. Cycleways updated and Toucan Crossings Added on B804 and A904 East.	EOB	RSM	IAG
02	23.05.2012	Ferryburn Junction Crossings Amended	EOB	RSM	IAG
01	11.04.2012	FIRST ISSUE	EOB	RSM	IAG

TRANSPORT SCOTLAND
An agency of The Scottish Government

Contractor

Forth Crossing Bridge Constructors
HOCHTIEF Solutions
American Bridge International
DRAGADOS
Morrisson Construction

Project
FORTH REPLACEMENT CROSSING

Drawing title
FOOTWAY / CYCLEWAY OVERVIEW SOUTH

File reference
Design JV
RAMBOLL **Grontmij Gifford**

Independent checker
AECOM **Scott Wilson**

Drawing status
INFORMATION

Drawn/Designed by: **EOB** Checked by: **RSM** Approved by: **DJV**
Initials: **EOB** Initials: **RSM** Initials: **IAG**

Scale: **NTS** **DO NOT SCALE**

Drawing number
FRC-P-K-008-D-NT-SKE-91110

Rev
03

A1 - DO NOT SCALE

This map is based upon Ordnance Survey material with the permission of Ordnance Survey on behalf of the Controller of Her Majesty's Stationery Office (© Crown copyright, unauthorised reproduction, storage, copying and may lead to prosecution or civil proceedings. Scottish Government 10020540 2009)